

THE CAROONA BLOCKADE

Where is the Blockade?

The Blockade is on the “Rossmar Park” property, north of Caroona village.

It was begun in July, 2008 by the local community to prevent

any damage to the aquifers caused by exploration for coal on the highly-fertile Liverpool Plains. We believe that, to safeguard Australia’s food and water security, this highly productive region, which feeds into the Murray Darling Basin, needs a fully independent, catchment-wide water study to understand the effect mining might have on the underground aquifers. We will not be lifting the Blockade without this study being undertaken.

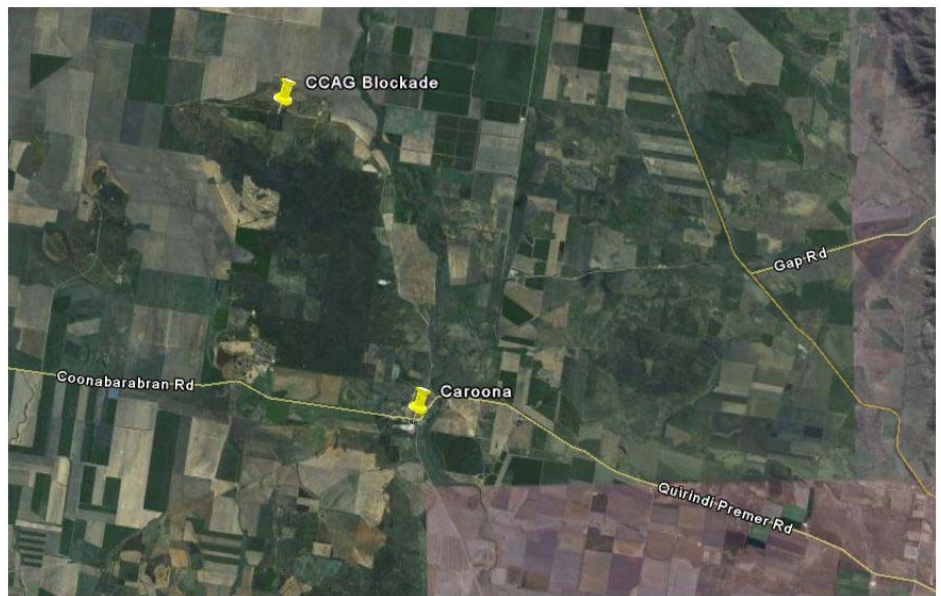
Visitors are welcome to join us from 8am – 5pm for a yarn, cup of tea and a piece of cake whilst we await common sense to prevail within the NSW government.



How do I get there?

Leaving Caroona, and just before crossing the Mooki River, turn left (north) at Walhallow & Rossmar Park sign, then in 400m turn right onto Rossmar Park Road (dirt). Proceed straight ahead for 10km, crossing a railway line and 4 cattle grids. You will also pass the entrance to Rossmar Park homestead on the left. The Blockade is 1km

further, on the right, in a timbered area highlighted by yellow “No Mines On Liverpool Plains - Our Food Bowl” signs.



Technically the location on your GPS is 31°19'39" South, 150°23' 05" East or Lat=-31.3275922075, Lon=150.384835244



Blockade notice board, blockade koala and some other regulars having a yarn

www.ccag.org.au